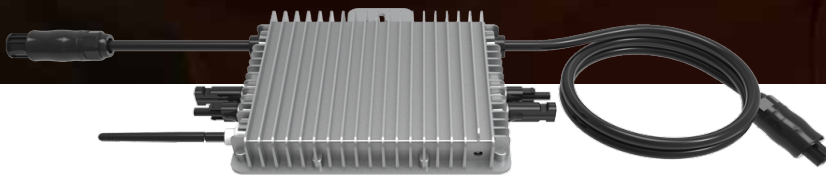
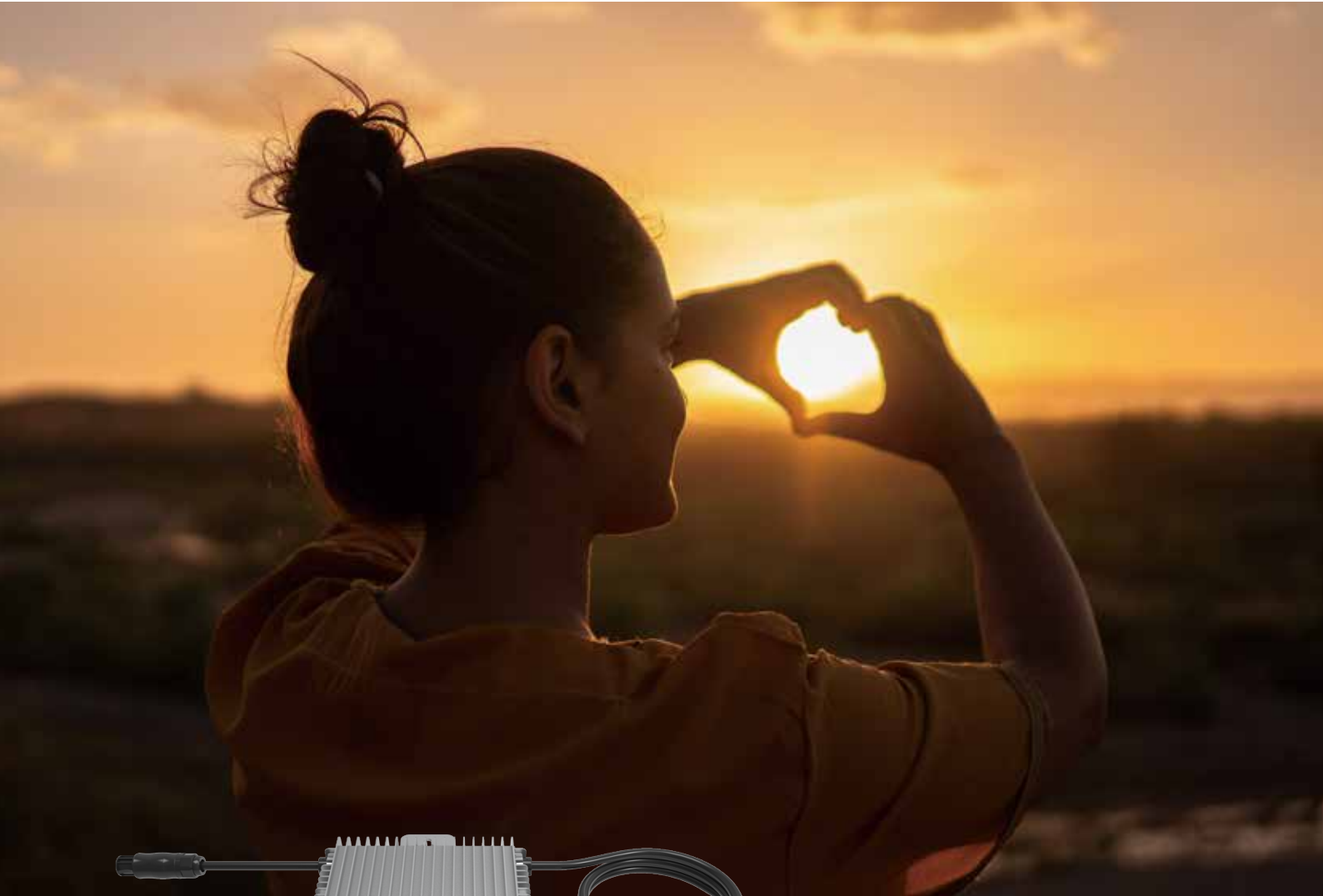


Microinverter

SUN600G3-US-220/EU-230

SUN800G3-US-220/EU-230 SUN1000G3-US-220/EU-230



Support reactive power compensation



Rapid shutdown function



IP67 protection degree, 10 years warranty



PLC, Zigbee or WIFI communication



2 MPP trackers, module level monitoring

Microinverter

| Model | SUN600G3 -US-220 | SUN600G3 -EU-230 | SUN800G3 -US-220 | SUN800G3 -EU-230 | SUN1000G3 -US-220 | SUN1000G3 -EU-230 |
|---|--|---------------------|---------------------|---------------------|----------------------|----------------------|
| Input Data (DC) | | | | | | |
| Recommended input Power (STC) | 210~400W (2 Piece) | | 210~500W (2 Piece) | | 210~600W (2 Pieces) | |
| Maximum input DC Voltage | 60V | | | | | |
| MPPT Voltage Range | 25~55V | | | | | |
| Operating DC Voltage Range | 20~60V | | | | | |
| Max. DC Short Circuit Current | 19.5A×2 | | | | | |
| Max. input Current | 13A×2 | | | | | |
| Number of MPPT / Strings per MPPT | 2 / 1 | | | | | |
| Output Data (AC) | | | | | | |
| Rated output Power | 600W | | 800W | | 1000W | |
| Rated output Current | 2.7A | 2.6A | 3.6A | 3.5A | 4.5A | 4.3A |
| Nominal Voltage / Range (this may vary with grid standards) | 220V/176-242V | 230V/184-265V | 220V/176-242V | 230V/184-265V | 220V/176-242V | 230V/184-265V |
| Nominal Frequency / Range | 50 / 60Hz | | | | | |
| Extended Frequency / Range | 45~55Hz / 55~65Hz | | | | | |
| Power Factor | >0.99 | | | | | |
| Maximum units per branch | 8 | | 6 | | 5 | |
| Efficiency | | | | | | |
| CEC Weighted Efficiency | 95% | | | | | |
| Peak Inverter Efficiency | 96.5% | | | | | |
| Static MPPT Efficiency | 99% | | | | | |
| Night Time Power Consumption | 50mW | | | | | |
| Mechanical Data | | | | | | |
| Ambient Temperature Range | -40~65°C | | | | | |
| Size (mm) | 212W×229H×40D (Without mounting bracket and cable) | | | | | |
| Weight (kg) | 3.5 | | | | | |
| Cooling | Natural cooling | | | | | |
| Enclosure Environmental Rating | IP67 | | | | | |
| Features | | | | | | |
| Compatibility | Compatible with 60~72 cell PV modules | | | | | |
| Communication | Power line / WIFI / Zigbee | | | | | |
| Grid Connection Standard | EN50549-1, VDE0126-1-1, VDE 4105, ABNT NBR 16149, ABNT NBR 16150, ABNT NBR 62116, RD1699, UNE 206006 IN, UNE 206007-1 IN, IEEE1547 | | | | | |
| Safety EMC / Standard | UL 1741, IEC62109-1/-2, IEC61000-6-1, IEC61000-6-3, IEC61000-3-2, IEC61000-3-3 | | | | | |
| Warranty | 10 years | | | | | |