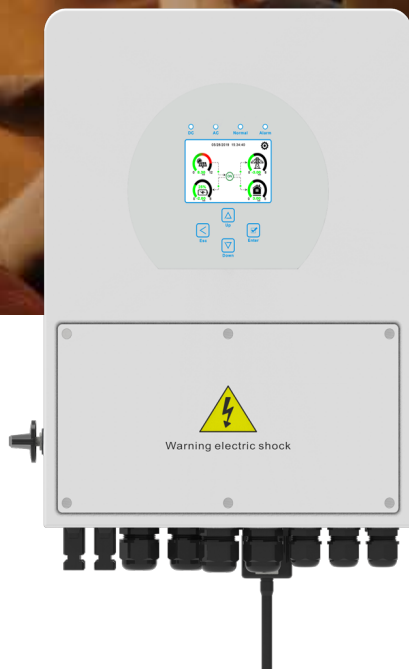


Hybrid Inverter

SUN- 3 / 3.6 / 5 / 6 K-SG04LP1-EU



Colorful touch LCD, IP65 protection degree

6

6 time periods for battery charging/discharging

120

Max. charging/discharging current of 135A

16

Frequency droop control, Max.16pcs parallel



DC couple and AC couple to retrofit existing solar system



Support storing energy from diesel generator

Model	SUN-3K-SG04LP1-EU	SUN-3.6K-SG04LP1-EU	SUN-5K-SG04LP1-EU	SUN-6K-SG04LP1-EU
Battery Input Data				
Battery Type	Lead-acid or Lithium-ion			
Battery Voltage Range (V)	40~60			
Max. Charging Current (A)	70	90	120	135
Max. Discharging Current (A)	70	90	120	135
Charging Curve	3 Stages / Equalization			
External Temperature Sensor	Yes			
Charging Strategy for Li-Ion Battery	Self-adaption to BMS			
PV String Input Data				
Max. DC Input Power (W)	3900	4680	6500	7800
Rated PV Input Voltage (V)	370			
Max. PV Input Voltage (V)	500			
Min. PV Input Voltage (V)	125			
Start-up Voltage (V)	125			
MPPT Range (V)	150-425			
Full Load DC Voltage Range (V)	250-425			
PV Input Current (A)	13	13+13		
Max. PV ISC (A)	17	17+17		
Number of MPPT / Strings per MPPT	1/1	2/1+1		
AC Output Data				
Rated AC Output and UPS Power (W)	3000	3600	5000	6000
Max. AC Output Power (W)	3300	3960	5500	6600
Peak Power (off grid)	2 times of rated power, 10 S			
AC Output Rated Current (A)	13.6/13	16.4/15.7	22.7/21.7	21.3/26.1
Max. AC Current (A)	15/14.3	18/17.2	25/23.9	30/28.7
Max. Continuous AC Passthrough (A)	35			40
Power Factor	0.8 leading to 0.8 lagging			
Output Frequency and Voltage	50/60Hz; 220/230Vac (single phase)			
Grid Type	Single Phase			
Current Harmonic Distortion	THD<3% (Linear load<1.5%)			
Efficiency				
Max. Efficiency	97.60%			
Euro Efficiency	96.50%			
MPPT Efficiency	99.90%			
Protection				
PV Input Lightning Protection	Integrated			
Anti-islanding Protection	Integrated			
PV String Input Reverse Polarity Protection	Integrated			
Insulation Resistor Detection	Integrated			
Residual Current Monitoring Unit	Integrated			
Output Over Current Protection	Integrated			
Output Shorted Protection	Integrated			
Output Over Voltage Protection	Integrated			
Surge protection	DC Type II / AC Type II			
Certifications and Standards				
Grid Connection Standard	EN50549-1, VDE0126, IEC61727, VDEN4105, G99, CEI0-21, NRS097, NBR16149/16150, RD1699			
Safety EMC / Standard	IEC62109-1/-2			
General Data				
Operating Temperature Range (°C)	-25~60°C, >45°C Derating			
Cooling	Natural cooling			
Noise (dB)	<30 dB			
Communication with BMS	RS485; CAN			
Weight (kg)	11.4			14
Size (mm)	365.5Wx470.5Hx228D			365.5Wx470.5Hx261D
Protection Degree	IP65			
Installation Style	Wall-mounted			
Warranty	5 years			